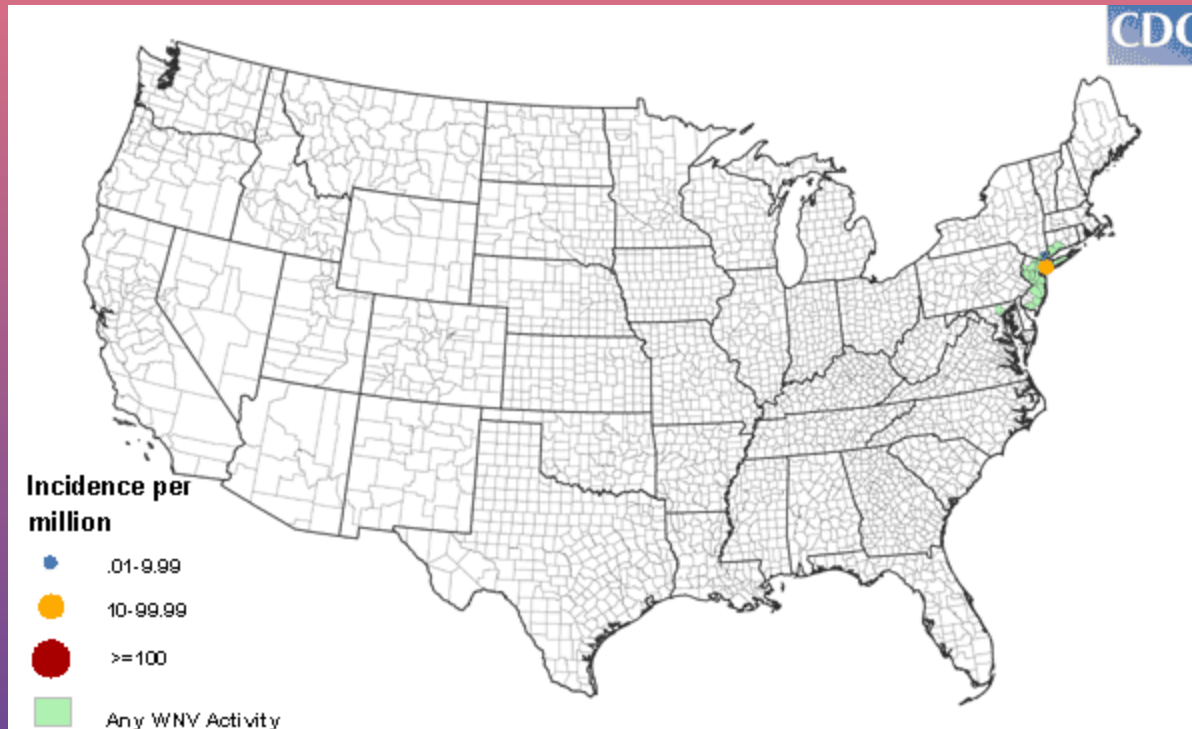




WEST NILE SPREADING HABITS

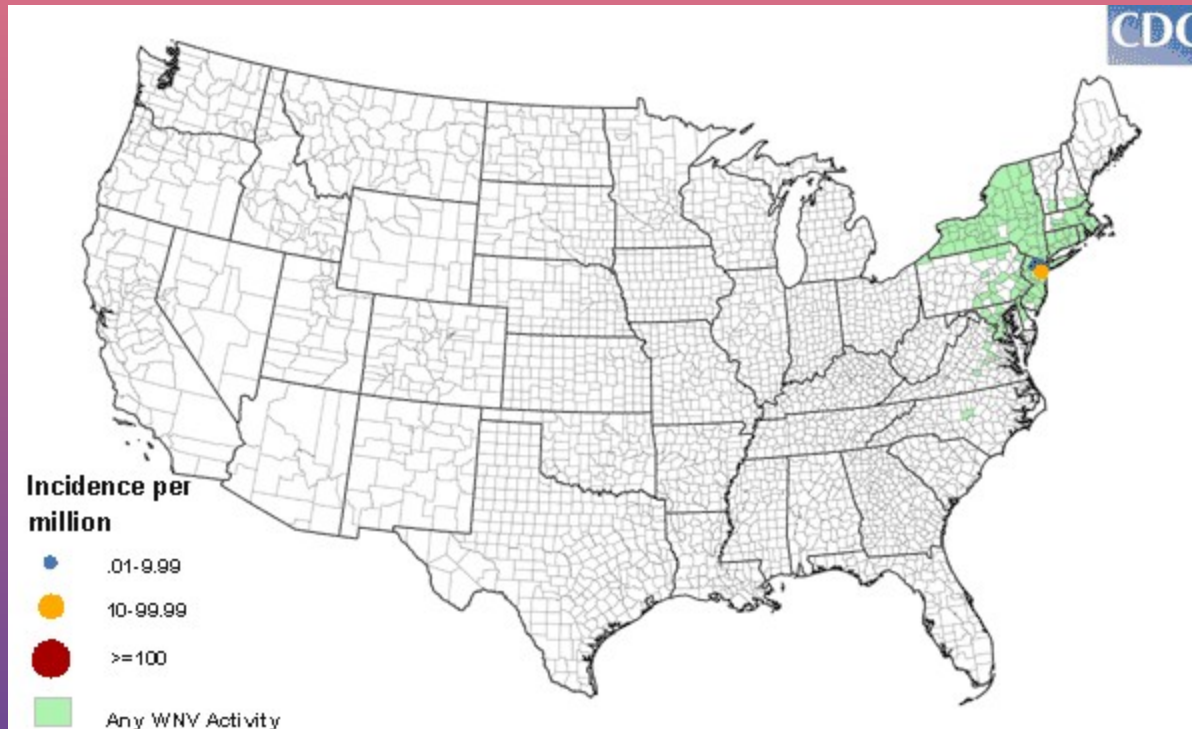
CDC DATA

1999 Start of US infections CDC records



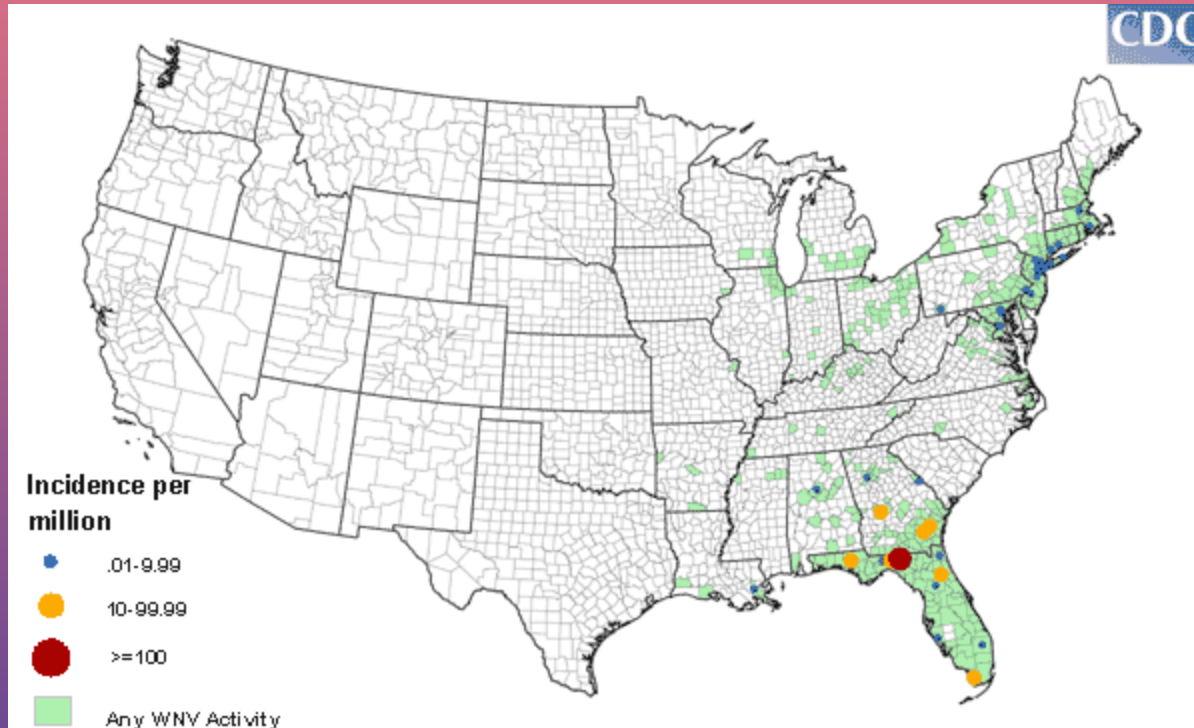
WNV pops up – NY area

2000



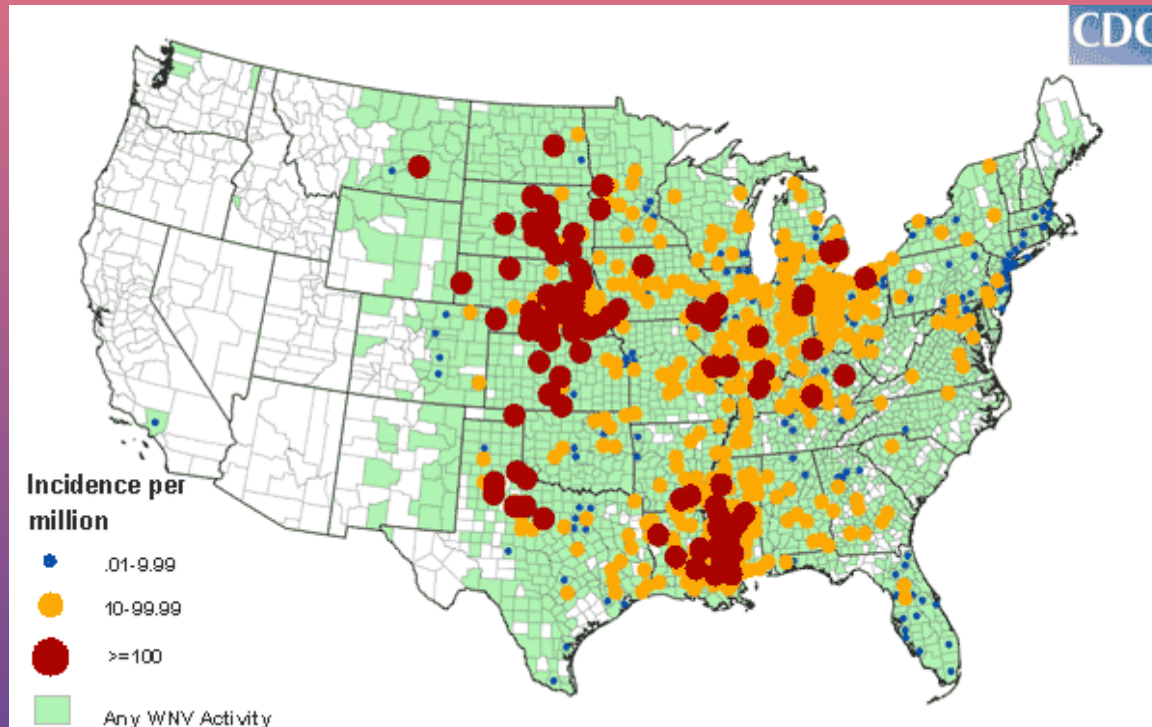
Spread through NY State and Northeast in second year

2001



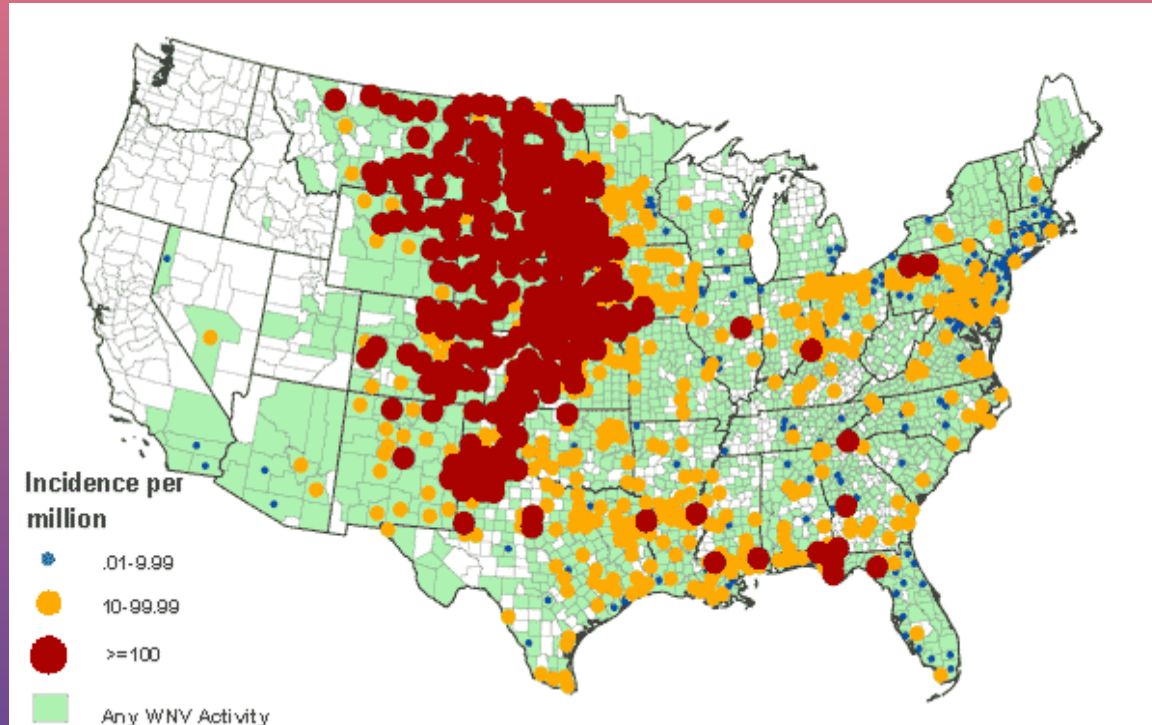
Spread to E Coast, Florida, some Midwest
third year

2002



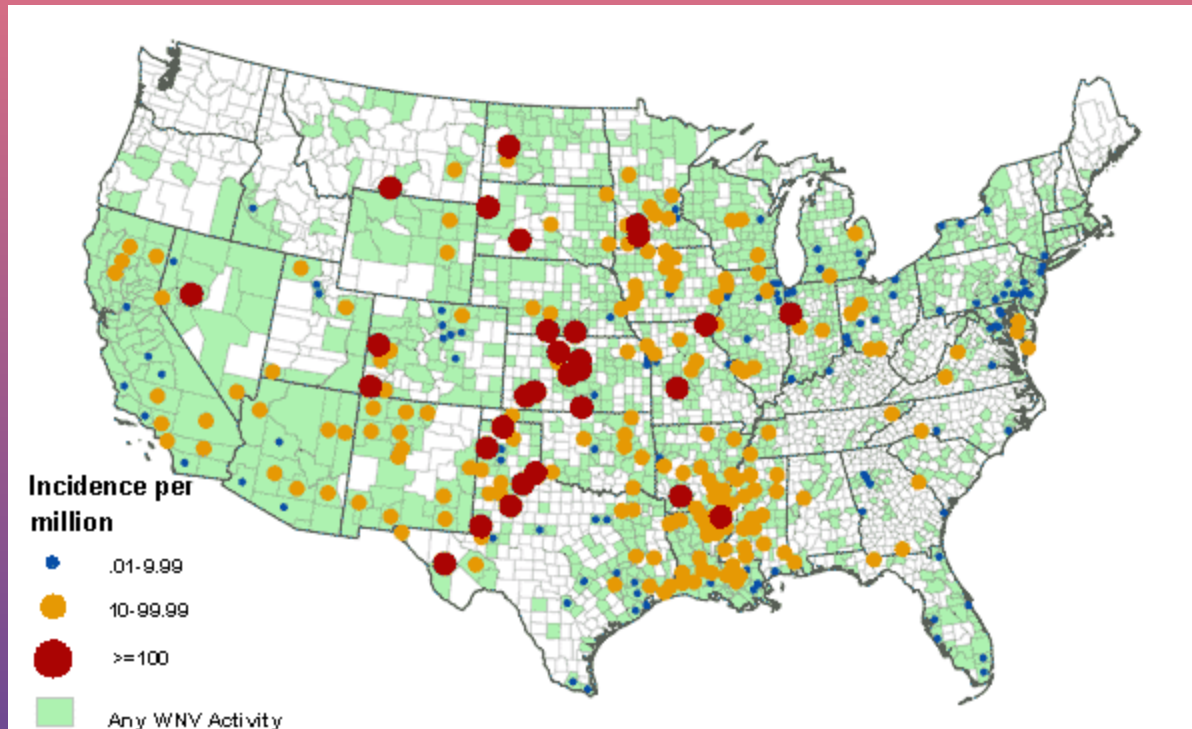
Large outbreak in Midwest and Midsouth
in 4th year

2003



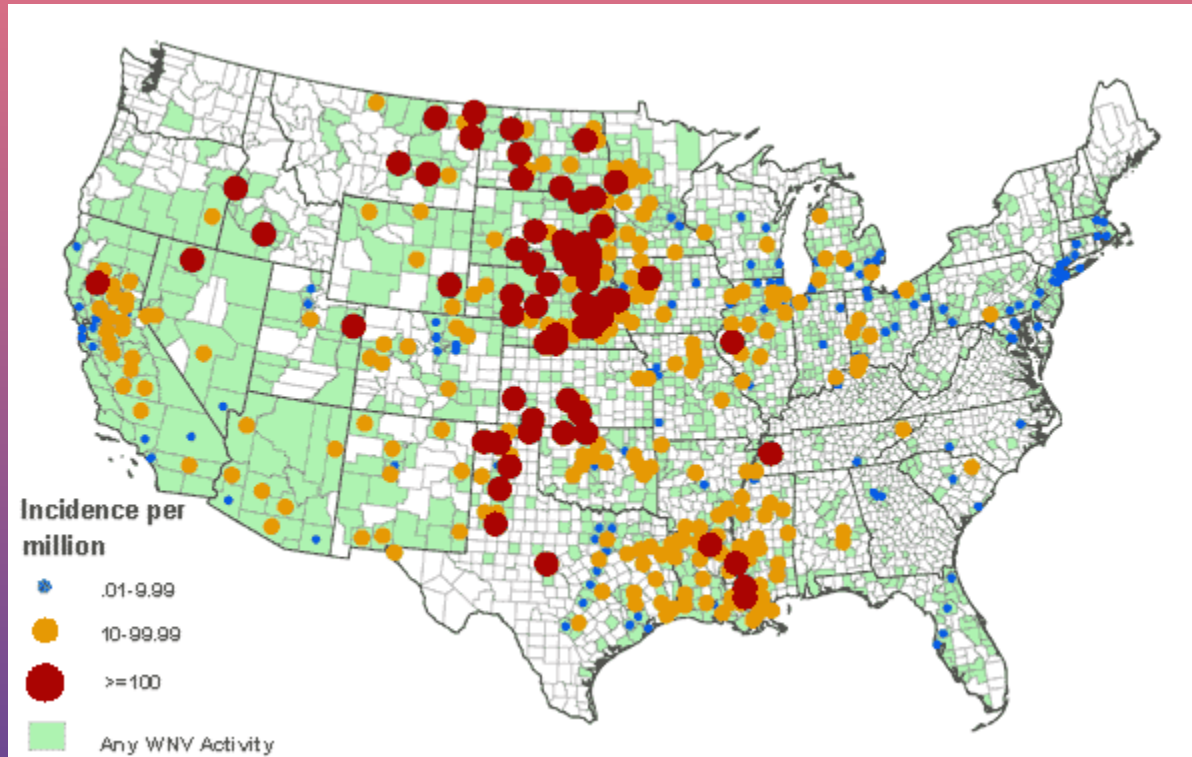
Explosion in Plains states

2004



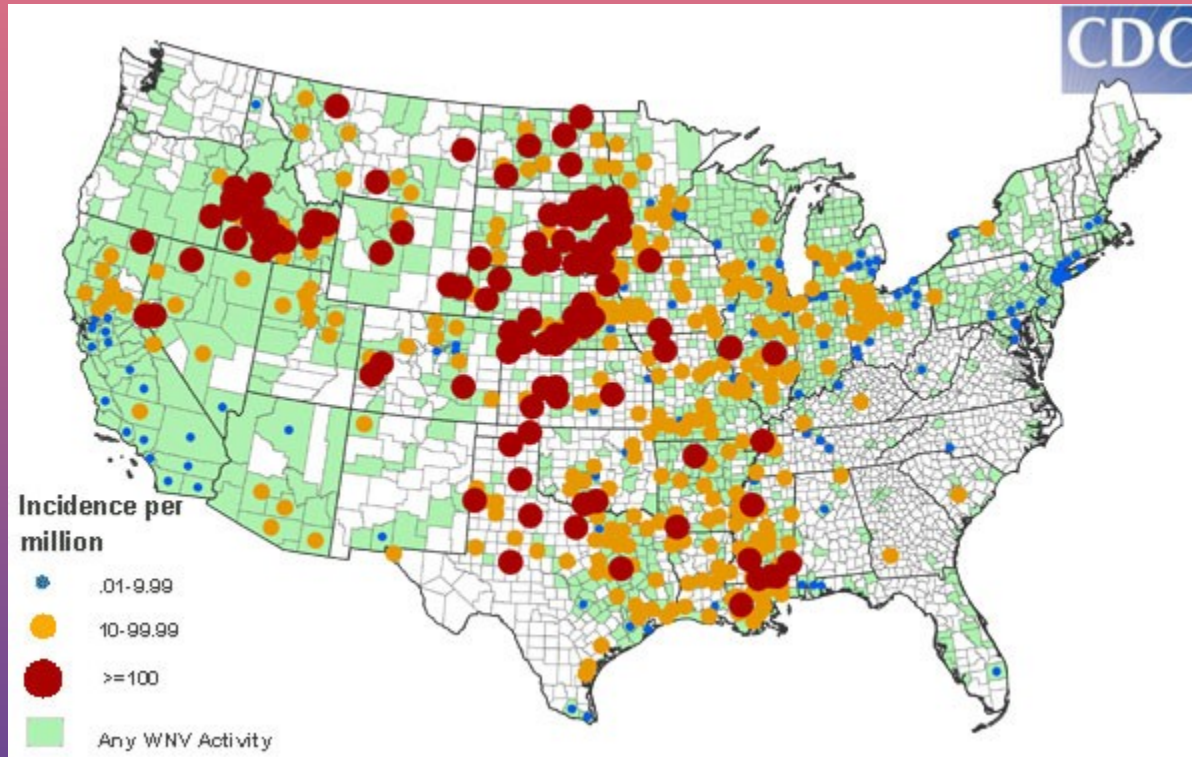
Quiet year but some California & West including SW Idaho,

2005



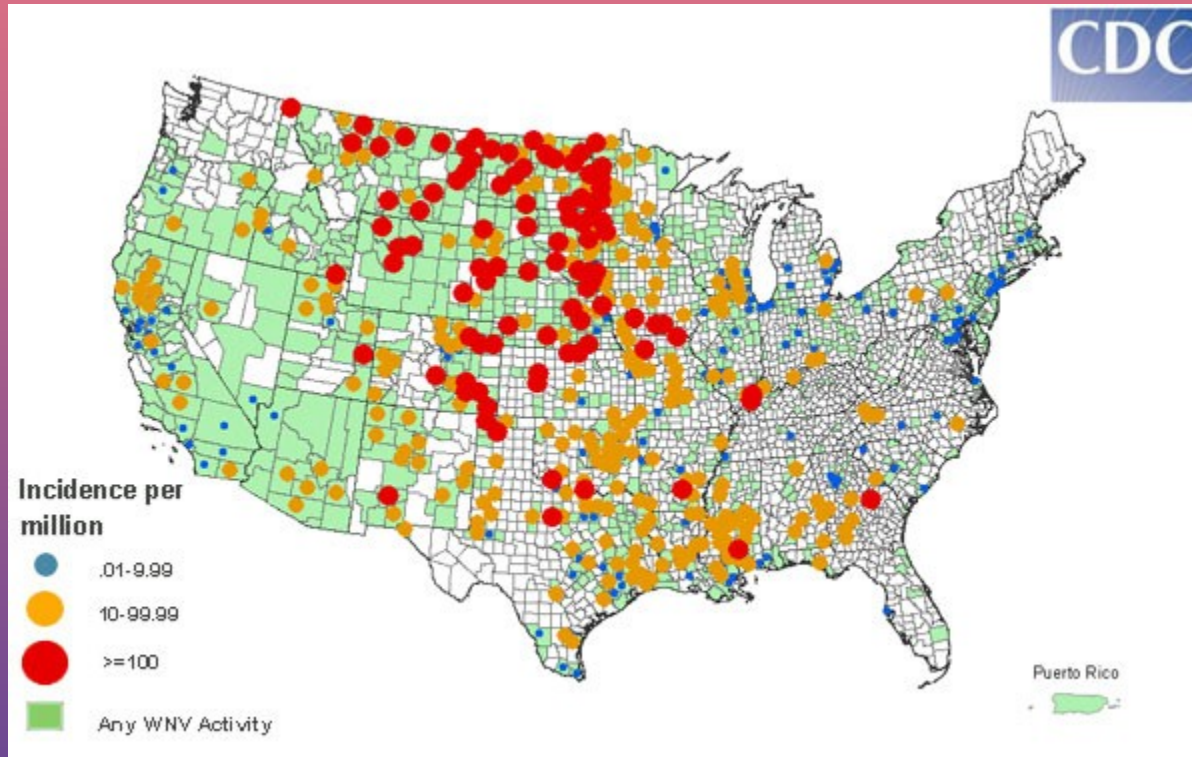
Resurgence in Plains, Midsouth, hot spots in SW Idaho

2006



Snake River Plain gets it bad

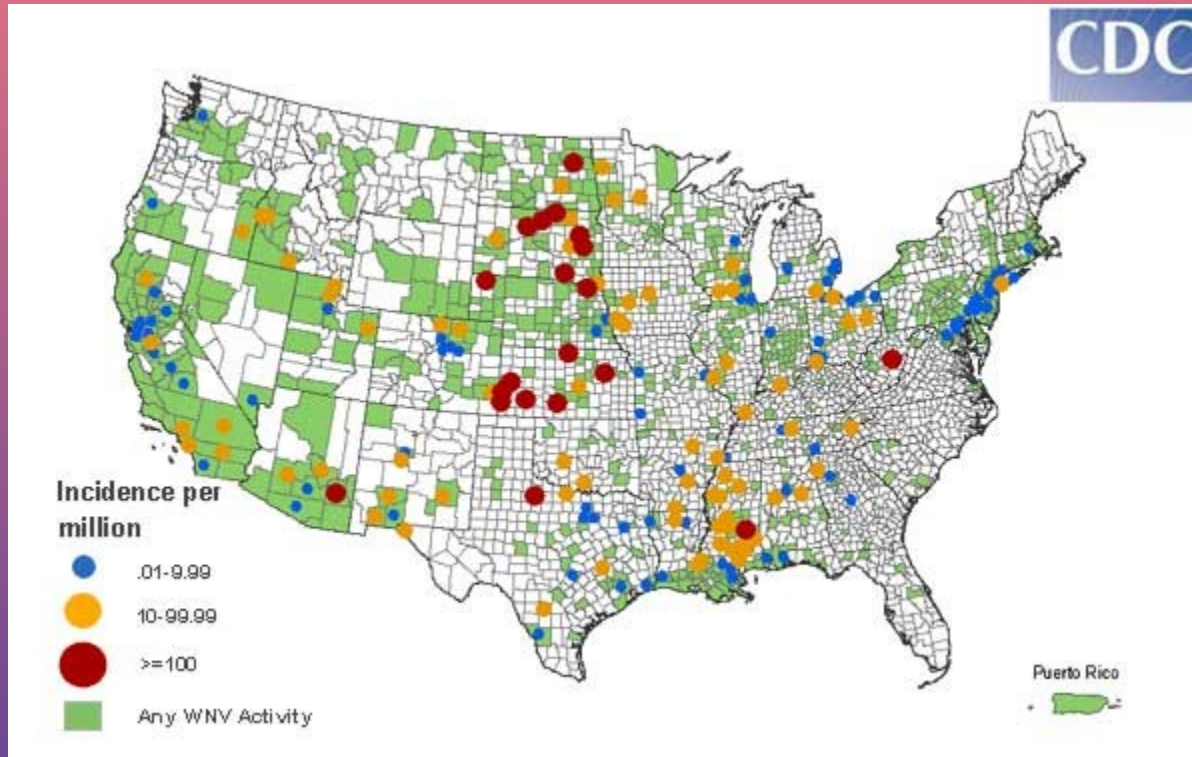
2007



Tails off in mid US, Idaho, some in Teton Valley & W Wyoming

Teton County Mosquito Abatement District
Board of Trustees

2008



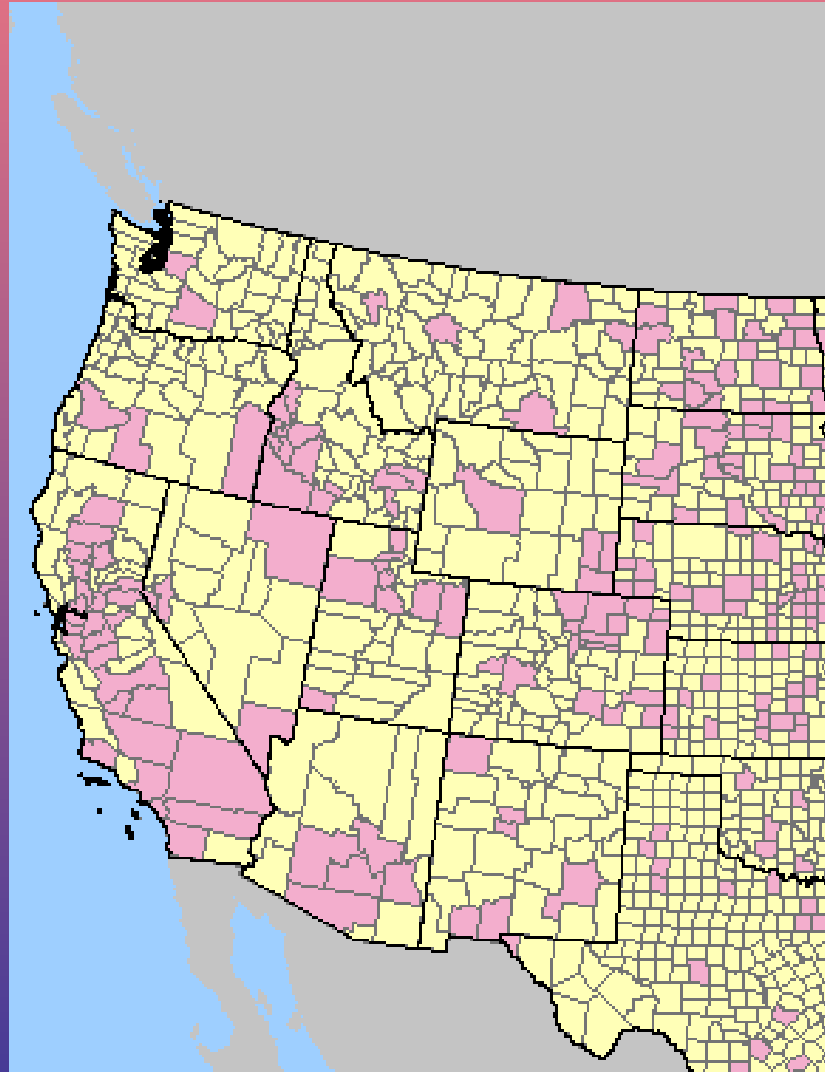
Nation quiet see next frame for local

2008 DATA AS OF 2/09

SW Idaho,
Bonnevile,
Bingham,

Bannock
Counties

show signs last
year



Teton County Mosquito Abatement District
Board of Trustees

What can we expect?

- WNV seems to surge and then subside
- Have we had a surge? Maybe not
- Cold winters have saved us up till now
- Winters are getting warmer
- We could have our surge in future years
- We should be vigilant, that is, we should monitor and control our risk

What are the odds?

- 4 out of 5 who get W Nile don't know it
- 1 out of 5 get the fever: nausea, vomiting, a month's misery, more months' recovery
- 1 out of 150 get West Nile Neuroinvasive Disease: paralysis like polio, meningitis-like symptoms, or encephalitis – brain infection
- Maybe one in ten with the Neuroinvasive disease die – usually old people

IS IT WORTH IT?

- One West Nile nervous system infection can cost >\$100,000
- One indigent case might cost the County or hospital that much
- Elderly people die of the W Nile Neuroinvasive Disease, and the County is getting more and more elderly
- Just on cost, 2 un-reimbursed cases/year pay the bills

What should the Mosquito District do?

- Make disease prevention the first priority
- Do good surveillance
- use the resources to control mosquitoes generally, with emphasis on disease carriers and be ready for a disease outbreak
- We reduce the pest population and protect against a West Nile invasion

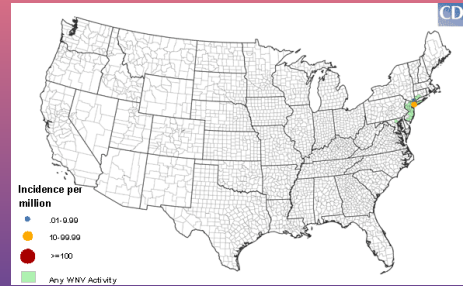


WEST NILE SPREADING
HABITS
CDC DATA

Board of Trustees

1

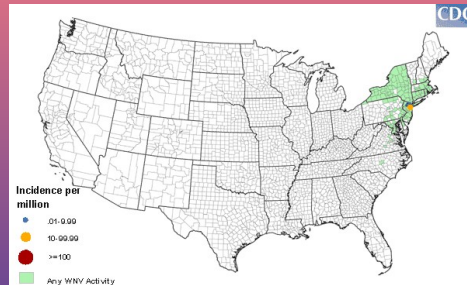
1999 Start of US infections CDC records



WNV pops up – NY area

Outbreak around NYC

2000



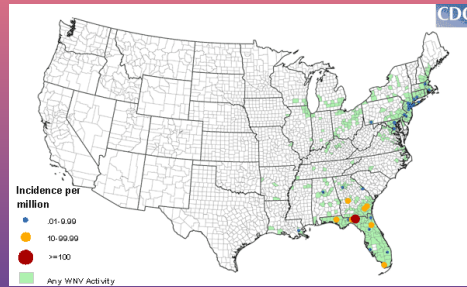
Spread through NY State and Northeast in second year

Teton County Mosquito Abatement District
Board of Trustees

3

Spread through NY State and East Coast in second year

2001



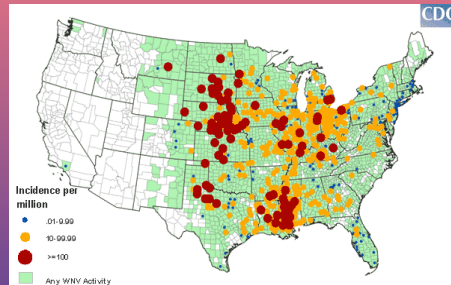
Spread to E Coast, Florida, some Midwest
third year

Teton County Mosquito Abatement District
Board of Trustees

4

Big outbreak in Florida and some in Midwest

2002



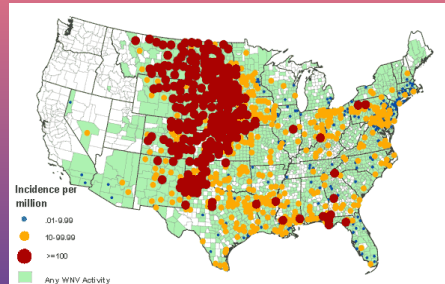
Large outbreak in Midwest and Midsouth
in 4th year

Teton County Mosquito Abatement District
Board of Trustees

5

Large outbreak in central US

2003



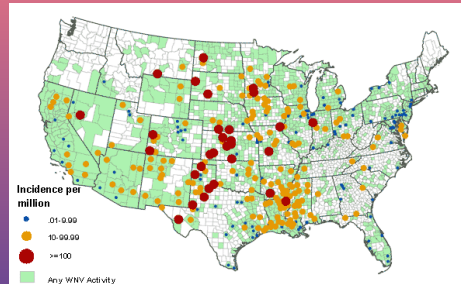
Explosion in Plains states

Teton County Mosquito Abatement District
Board of Trustees

6

Even bigger outbreak, moving west

2007



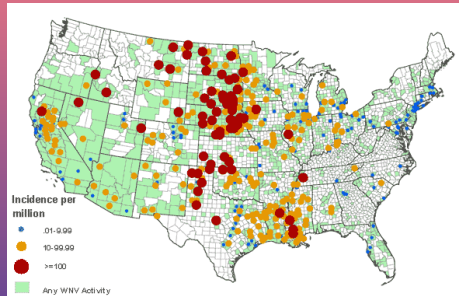
Quiet year but some California & West including SW Idaho,

Teton County Mosquito Abatement District
Board of Trustees

7

Mid US subsides, California, Rockies, and SW Idaho start

2005



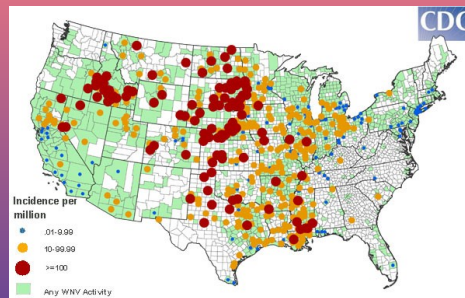
Resurgence in Plains, Midsouth, hot spots in SW Idaho

Teton County Mosquito Abatement District
Board of Trustees

8

More in California, more in SW Idaho and Rockies second surge in mid US

2006



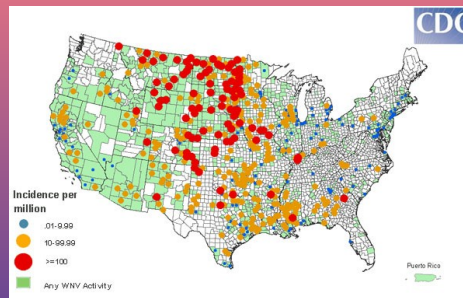
Snake River Plain gets it bad

Teton County Mosquito Abatement District
Board of Trustees

9

More mid US, heavy in Snake River Valley

2007



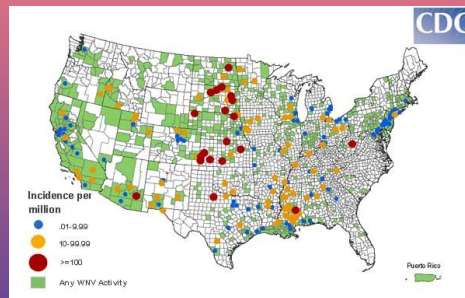
Tails off in mid US, Idaho, some in Teton Valley & W Wyoming

Teton County Mosquito Abatement District
Board of Trustees

10

Tail of surge in mid US, decline in idaho, some in Teton Valley

2008



Nation quiet see next frame for local

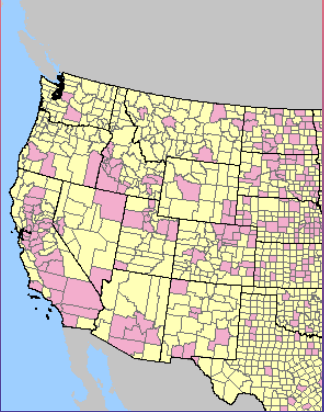
Teton County Mosquito Abatement District
Board of Trustees

11

Decline almost everywhere, only Bonneville County in SE Idaho

2008 DATA AS OF 2/09

SW Idaho,
Bonneville,
Bingham,
Bannock
Counties
show signs last
year



Teton County Mosquito Abatement District
Board of Trustees

What can we expect?

- WNV seems to surge and then subside
- Have we had a surge? Maybe not
- Cold winters have saved us up till now
- Winters are getting warmer
- We could have our surge in future years
- We should be vigilant, that is, we should monitor and control our risk

What are the odds?

- 4 out of 5 who get W Nile don't know it
- 1 out of 5 get the fever: nausea, vomiting, a month's misery, more months' recovery
- 1 out of 150 get West Nile Neuroinvasive Disease: paralysis like polio, meningitis-like symptoms, or encephalitis – brain infection
- Maybe one in ten with the Neuroinvasive disease die – usually old people

IS IT WORTH IT?

- One West Nile nervous system infection can cost >\$100,000
- One indigent case might cost the County or hospital that much
- Elderly people die of the W Nile Neuroinvasive Disease, and the County is getting more and more elderly
- Just on cost, 2 un-reimbursed cases/year pay the bills

What should the Mosquito District do?

- Make disease prevention the first priority
- Do good surveillance
- use the resources to control mosquitoes generally, with emphasis on disease carriers and be ready for a disease outbreak
- We reduce the pest population and protect against a West Nile invasion